

# Clariflo®



**WARNING:** Read these instructions before using the machine

## PROFESSIONAL HIGH PRESSURE HOT WASHER

MODEL NO: KING 300

PART NO: 7320182

## OPERATION & MAINTENANCE INSTRUCTIONS

UK  
CA | CE



ORIGINAL INSTRUCTIONS

GC0425

---

## **INTRODUCTION**

---

Thank you for purchasing this CLARKE Hot Washer.

The machine has been designed to use hot or cold water to clean any surfaces which can stand the force of the high pressure water jet. The machine must only be used for the purpose for which it was designed.

Before attempting to use this product, please read this manual thoroughly and follow the instructions carefully. In doing so you will ensure the safety of yourself and that of others around you, and you can look forward to your purchase giving you long and satisfactory service.

---

## **GUARANTEE**

---

This product is guaranteed against faulty manufacture for a period of 12 months from the date of purchase. Please keep your receipt which will be required as proof of purchase.

This guarantee is invalid if the product is found to have been abused or tampered with in any way, or not used for the purpose for which it was intended.

Faulty goods should be returned to their place of purchase, no product can be returned to us without prior permission.

This guarantee does not effect your statutory rights.

---

## **UNPACKING**

---

Put two wheels of the machine on the ground to remove from the pallet.

The following items should be supplied. If any parts are missing or damaged, please see your CLARKE dealer.

- 1 x Pressure Washer
- 1 x Gun Assembly
- 1 x Lance
- 1 x Water Inlet Hose Adapter/filter
- 1 x High Pressure Hose Assembly
- 4 x High Pressure Nozzles

---

# GENERAL SAFETY RULES

---



**WARNING: WATER AT HIGH PRESSURE CAN BE DANGEROUS AND CAN CAUSE DAMAGE IF THE OPERATOR IS CARELESS. NEVER ALLOW ANYONE TO OPERATE THIS PRESSURE WASHER UNLESS THEY ARE FAMILIAR WITH THE SAFETY PRECAUTIONS.**

---

1. **NEVER** direct the spray towards any person or animal.
2. **NEVER** hold your finger over the high pressure nozzle.
3. **NEVER** allow children or untrained personnel to use this machine.
4. **NEVER** operate the machine with any of the covers removed.
5. **NEVER** supply any liquid other than water to the water inlet.
6. **NEVER** use the detergent bottle to introduce flammable liquids/solvents, e.g. paint thinners, petrol, oil as there is a risk of explosion.
7. **NEVER** direct the jet at electrical equipment or the machine itself.
8. **NEVER** use the pressure washer if the power cable or important parts of the machine are damaged.
9. **ALWAYS** release any residual pressure in the system by turning off the water supply and operating the trigger before disconnecting any hose or accessory.
10. **ALWAYS** keep the machine itself dry and well clear of water spray.
11. **ALWAYS** wear protective clothing and safety glasses. Loose particles and other debris may be propelled at high speed by the water jet.
12. **ALWAYS** grip the gun firmly and expect the spray gun to 'kick' when starting.
13. **ALWAYS** respect the requirements of the local water company. Pressure washers may only be connected to the mains drinking water supply, if a system separator (known as a backflow preventer) is installed in the supply hose. **WARNING:** Water that has flowed through a system separator (known as a backflow preventer) is considered non-drinkable.
14. **ALWAYS** disconnect from the water supply and ensure the machine is completely drained when not in use. Store in a cool dry location.
15. **NEVER** allow water or other liquid to enter the chimney and cover the chimney over in case of rain. **DO NOT** touch the chimney in case of burning or scalding.
16. **WARNING:** High pressure water jets can be dangerous if subject to misuse. The jet must not be directed at a person or anything that they are wearing.
17. **WARNING:** High pressure hoses, fittings and couplings are important for machine safety of the. Only use those recommended by the manufacturer.

---

## **SAFETY DEVICES**

---

Safety devices serve for the protection of the user and must not be put out of operation or bypassed with respect to their function.

### **OVERFLOW VALVE AND PRESSURE SWITCH**

While reducing the water supply at the pump head or with the Servopress - regulation the overflow valve opens and part of the water flows back to the pump suction side.

If the spray gun is closed so that all the water flows back to the pump suction side, the pressure switch at the overflow valve shuts down the pump.

If the spray gun is opened, the pressure switch on the cylinder head turns the pump back on.

The overflow valve is set by the manufacturer and sealed. Setting is only permitted by an authorised dealer.

### **SAFETY VALVE**

The safety valve opens when the overflow valve is not responding/the pressure switch is broken.

The safety valve is set by the manufacturer and sealed. Setting is only permitted by an authorised dealer.

### **WATER SHORTAGE SAFEGUARD**

The water shortage safeguard prevents the burner to be turned on when there is a water shortage in the machine.

---

## **ENVIRONMENTAL RECYCLING POLICY**

---

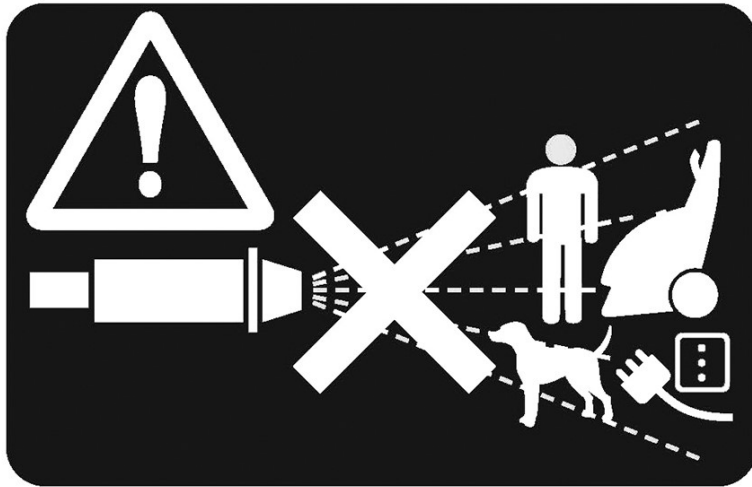


Through purchase of this product, the customer is taking on the obligation to deal with the WEEE in accordance with the WEEE regulations in relation to the treatment, recycling & recovery and environmentally sound disposal of the WEEE.

In effect, this means that this product must not be disposed of with general household waste. It must be disposed of according to the laws governing Waste Electrical and Electronic Equipment (WEEE) at a recognised disposal facility.

If disposing of this product or any damaged components, do not dispose of with general waste. This product contains valuable raw materials. Metal products should be taken to your local civic amenity site for recycling of metal products.

# SYMBOLS ON THE MACHINE



The high pressure jet must not be directed at persons, animals, live electrical equipment or at the appliance itself.

	<p>Read the manual before use.</p>		<p>Failing to follow these instructions could result in injury or damage to the machine.</p>
	<p>Hot surface Do Not Touch</p>		<p>Wear safety glasses when using this machine.</p>
	<p>Wear ear protection</p>		<p>Respiratory hazard. Always Wear Protection.</p>
	<p>Conforms to UKCA &amp; CE Regulations</p>		

# ELECTRICAL CONNECTIONS



**WARNING: READ THESE ELECTRICAL SAFETY INSTRUCTIONS THOROUGHLY BEFORE CONNECTING THE PRODUCT TO THE MAINS SUPPLY.**

Before switching the product on, make sure that the voltage of your electricity supply is the same as that indicated on the rating plate. This product is designed to operate on 230VAC 50Hz. Connecting it to any other power source may cause damage.

If the fuse cover becomes lost or damaged, the plug must not be used until a suitable replacement is obtained.

If the plug has to be changed, it should be cut off and a replacement fitted, following the wiring instructions shown below. The old plug must be disposed of safely, as insertion into a mains socket could cause an electrical hazard.



**WARNING: THE WIRES IN THE POWER CABLE OF THIS PRODUCT ARE COLOURED IN ACCORDANCE WITH THE FOLLOWING CODE: BLUE = NEUTRAL BROWN = LIVE YELLOW AND GREEN = EARTH**

If the colours of the wires in the power cable of this product do not correspond with the markings on the terminals of your plug, proceed as follows.

- The blue wire must be connected to the terminal marked **N**.
- The brown wire must be connected to the terminal marked **L**.
- The yellow and green wire must be connected to the terminal marked **E** or  $\perp$ .

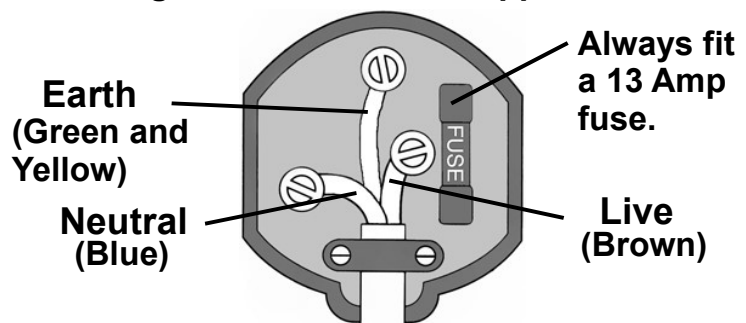
**We strongly recommend that this machine is connected to the mains supply via a Residual Current Device (RCD).**

## EXTENSION CABLES

When used outdoors, ensure that the extension cable is designed for outdoor use. Ensure that the cable is rated for the voltage and amperage of the machine.

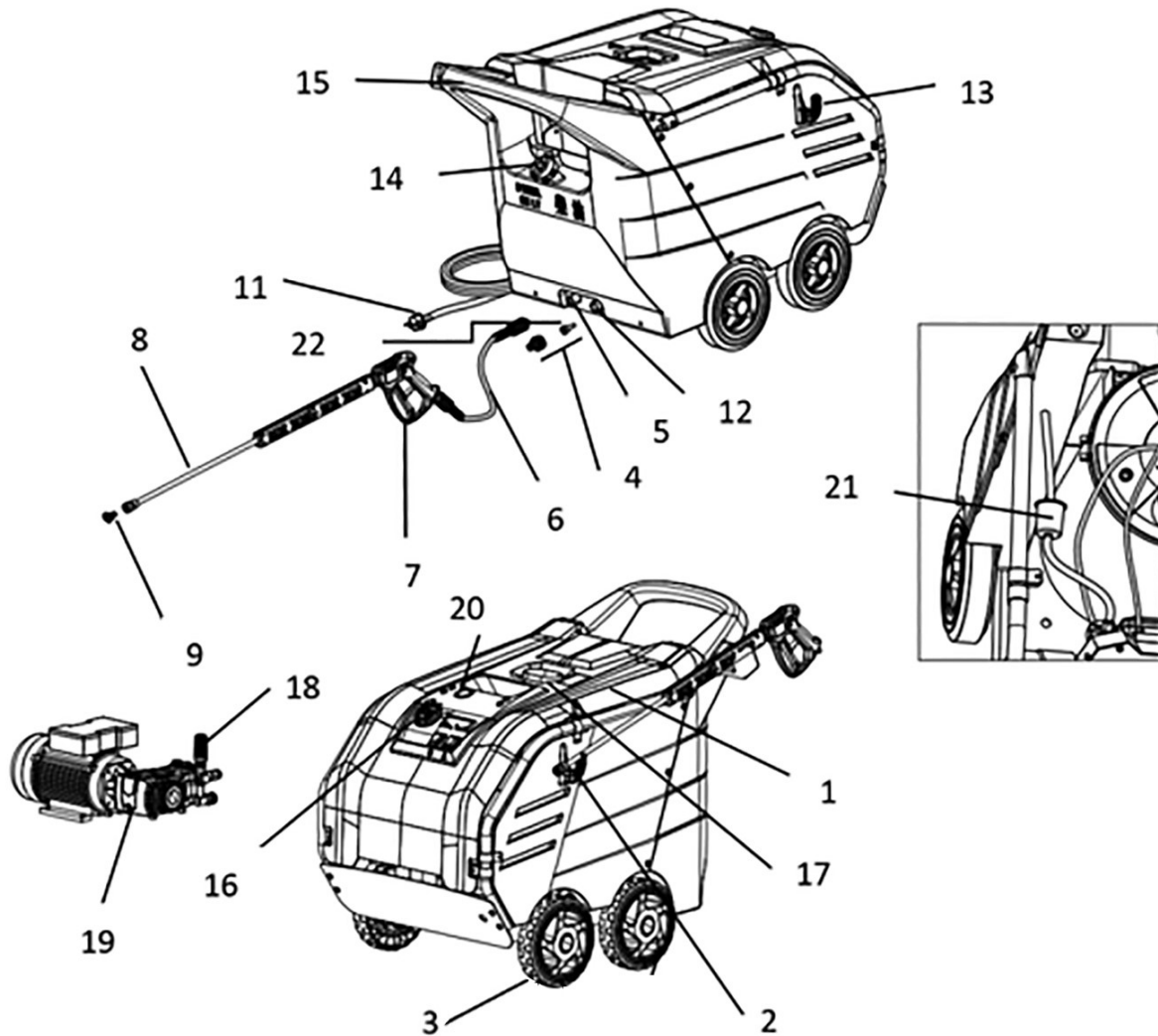
**If in any doubt, consult a qualified electrician. DO NOT attempt any repairs yourself.**

Plug must be BS1363/A approved.



Ensure that the outer sheath of the cable is firmly held by the clamp

# OVERVIEW OF THE MACHINE



1	Cover
2	Spray Lance holder
3	Wheel
4	Water supply connector
5	High pressure connection
6	High pressure hose
7	Safety latch (hand spray gun)
8	Spray lance
9	High pressure nozzle
10	Hand spray gun
11	Power supply

12	Water supply connection
13	Power supply holder
14	Pouring vent for filter
15	Handle
16	Control panel
17	Accessory storage compartment
18	Pump regulator
19	Oil drain port
20	Manometer (optional)
21	Fuel filter
22	Water filter

---

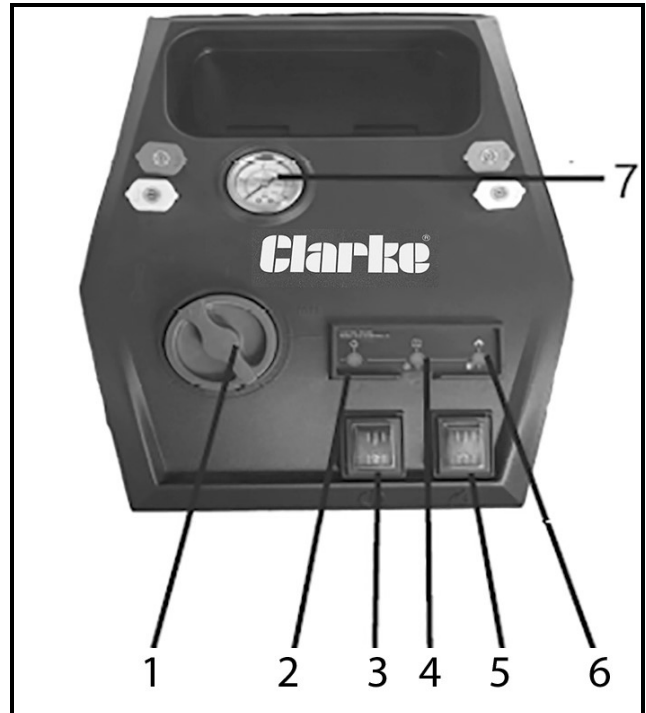
## THE CONTROL PANEL

---

1. Temperature Controller
2. Power Indicator Lamp
3. Power Switch
4. Ignition Indicator Lamp
5. Boiler Switch (for hot water)
6. Fuel Indicator Lamp
7. Manometer

Four different spray nozzles are provided and stored in the control panel. They are to be used for operation at 0, 15, 25 and 40 degrees.

- Red 0°
- Yellow 15°
- Green 25°
- White 40°



---

## CONNECTION TO THE WATER SUPPLY

---

The pressure washer must NEVER be connected to the drinking water supply without using a system separator (also known as a backflow preventer).

ALWAYS follow the regulations of your local water supplier.



CAUTION: WATER THAT HAS FLOWED THROUGH A SYSTEM SEPARATOR IS CONSIDERED NON-DRINKABLE.

**IMPORTANT:** Only clean or filtered water should be used for the intake. The delivery of the water supply tap should be double the maximum pump range of the machine.

### ATTENTION

Operate to local legislation on water use. Equipment can only be connected to the water supply if the supply pipe is provided with a check valve due to the risk of mains water contamination.

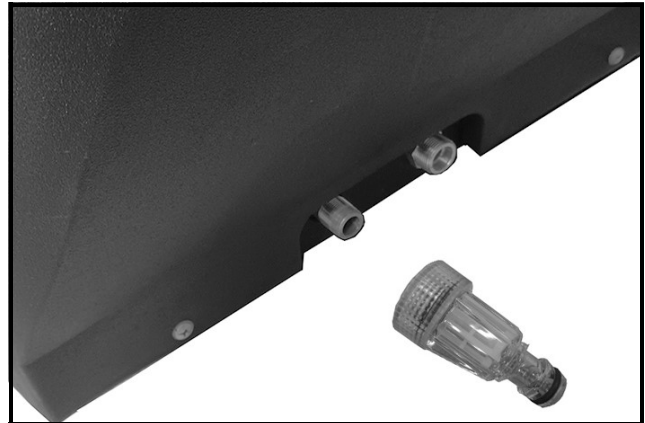


Failure to comply with the above conditions causes serious mechanical damage to the pump and the loss of warranty.

1. Connect the supply hose to the water supply.
2. Screw the hose adaptor supplied onto the water inlet to the left of the machine by hand as shown.
  - **DO NOT** use any tools to tighten the adaptor.

Connect the supply hose (minimum length 7.5 m, minimum diameter 3/4") to the water connection point of the machine and at the water supply point (e.g. a tap) using a hose clamp.

- The supply hose and the hose clamp are not supplied with the machine.

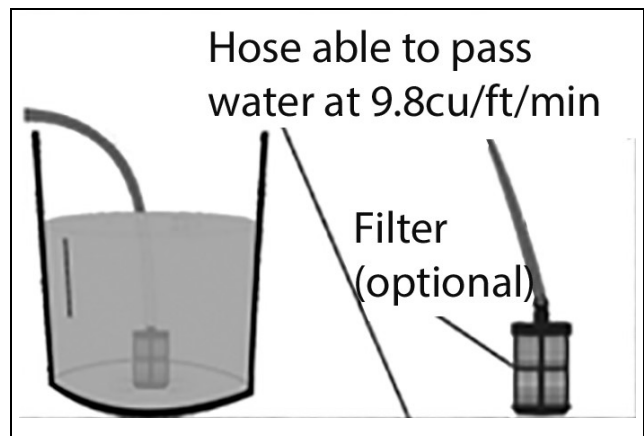


## DRAWING WATER FROM A VESSEL

If you need to draw water from an external vessel follow the diagram.

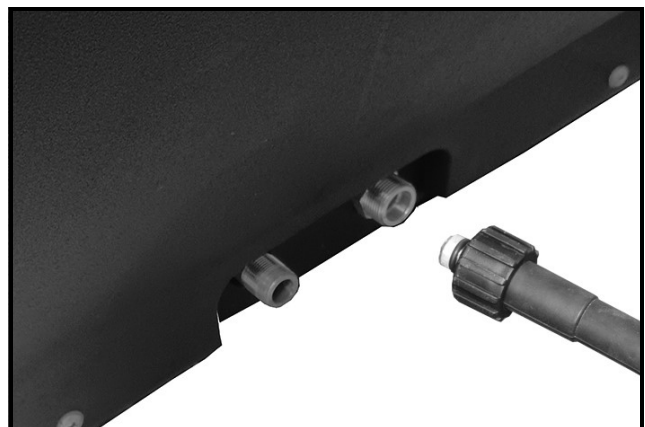
### DANGER

NEVER draw water from drinking water containers. NEVER use liquids containing solvents such as paint thinner, petrol, oil or unfiltered water which could spray mist that is flammable, explosive or poisonous. The machine seals are not resistant to solvents.



## CONNECTING THE DELIVERY HOSE

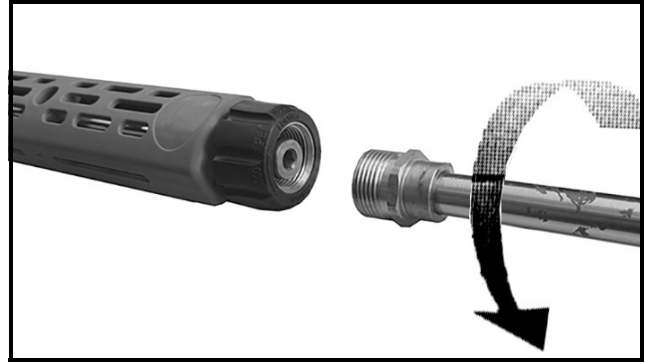
1. Remove any travel cap provided from the high pressure hose outlet and screw the hose to the connector.
  - Tighten the connector by hand only - DO NOT use any tools.
  - Make sure the connection is secure.
2. Connect the other end of the high pressure hose to the gun assembly and tighten hand-tight.



**NOTE:** ALWAYS unwind the high pressure hose completely.

## ATTACH THE EXTENSION LANCE

1. Connect the extension lance to the gun assembly.

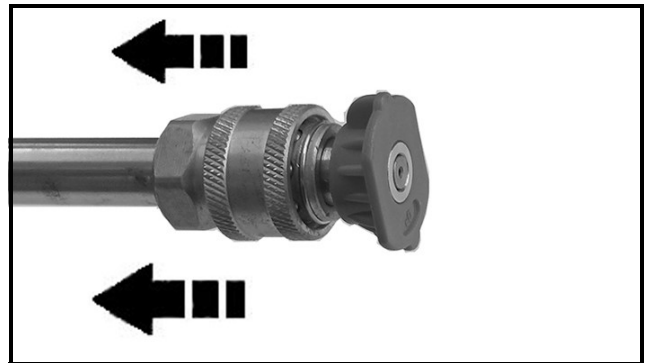


## FITTING A NOZZLE

Fit the appropriate lance nozzle from the selection of four according to the washing temperature to be used.

These are stored in clips within the control panel as stated on page 8.

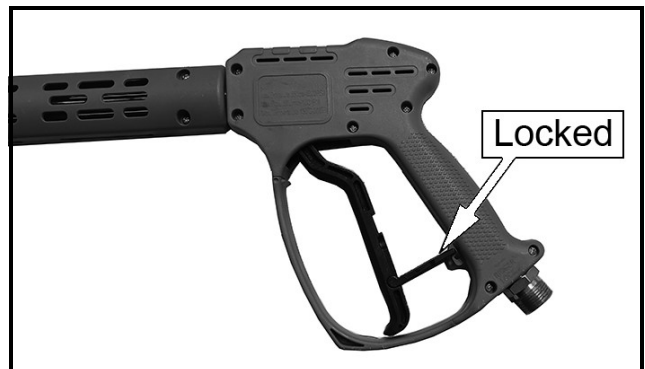
Slide the spring-loaded sleeve back to engage.



## GUN SAFETY LOCK

The safety lever on the gun is not there to lock the lever during operation, but to prevent its accidental operation.

1. Lower the locking lever to the position shown to prevent the trigger from being pulled.
2. Fold the locking lever flat to release the trigger.



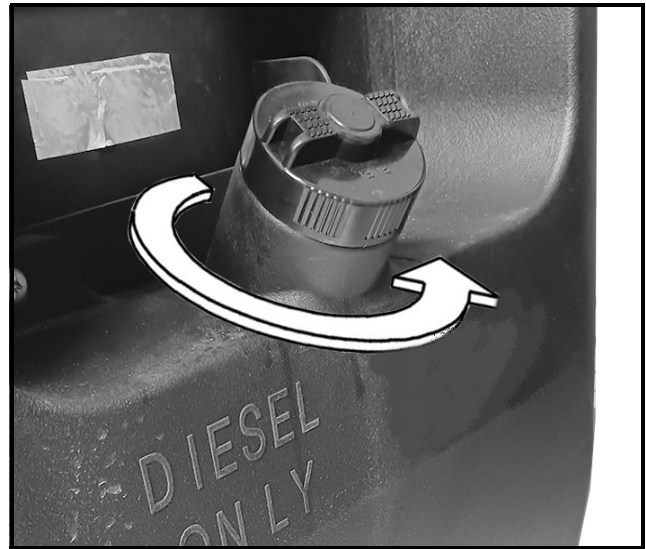
## ADDING FUEL(DIESEL)



**WARNING: INCORRECT FUELS (EG PETROL) MUST NOT BE USED AS THEY MAY PROVE HAZARDOUS.**

- **ALWAYS** refuel in a well-ventilated area, away from sources of ignition.
- **NEVER** leave fuel within the reach of children.
- **ALWAYS** re-fuel carefully to avoid spillages.

1. Remove the diesel filler cap and fill the tank with diesel fuel only.
  - Minimum 4 litres
  - Maximum 22 litres.
2. Replace the filler cap securely.



## SETTING THE MACHINE WORKING

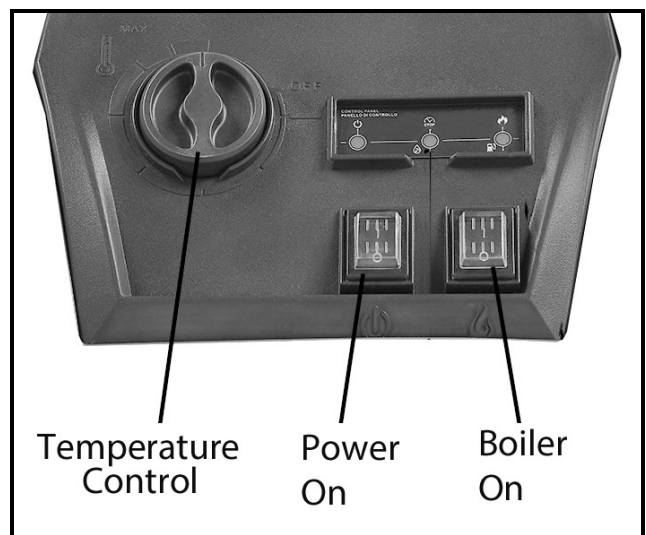
### TURNING ON THE MACHINE

1. Set the switches to desired operating mode.
  - 0/OFF =off I/ON =on
  - Cold water operation
  - Hot water operation

The machine will start briefly and turn off as soon as the working pressure is reached.

When activating the spray gun the machine switches back on.

**NOTE:** If no water comes out of the nozzle, vent the pump. Refer to Troubleshooting- as the machine is not building up pressure.

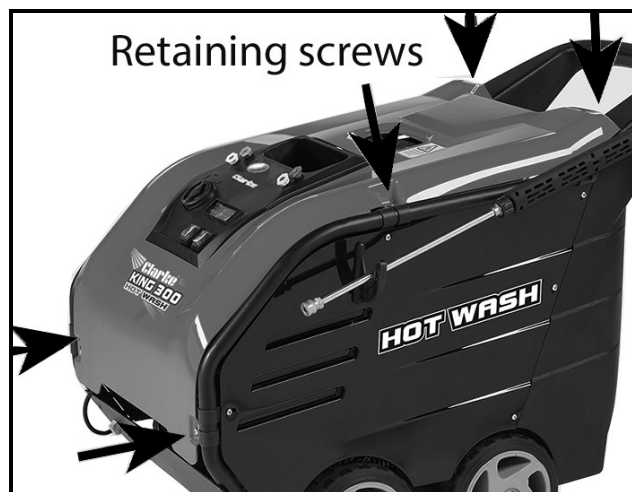


### ADJUST THE CLEANING TEMPERATURE

1. Set the temperature regulator to the desired temperature. (between 30°C and 95°C)
2. Begin cleaning with hot water.

## SET THE WORKING PRESSURE AND FLOW RATE

1. If the working pressure/water flow rate is unsuitable it can be adjusted using the regulator.
2. Remove the top cover panel to gain access to the regulator by removing the six retaining screws and lifting the panel away.
3. Turn the regulator in a clockwise direction to increase working pressure (MAX).

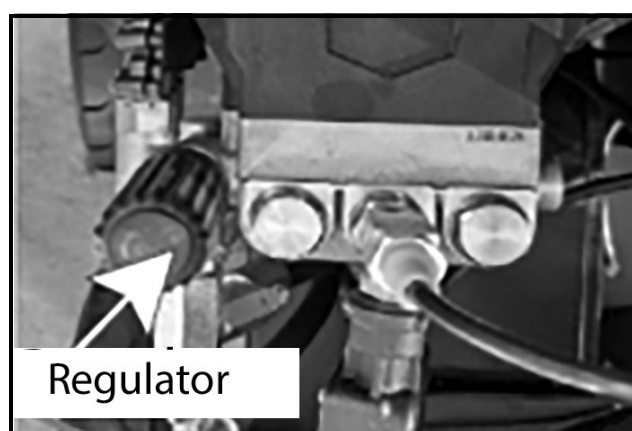


4. Turn the regulator in an anticlockwise direction to reduce working pressure (MIN).

**NOTE:** For continuous work with low pressure, set the pressure at the pump unit.

## CLEANING

1. Set the pressure/temperature according to the surface being cleaned.



**NOTE:** To prevent damage due to excess pressure, always aim the high pressure jet first from a greater distance towards object to be cleaned.

2. Loosen the dirt by spraying economically and let it soak for a few minutes.
3. Spray off loosened dirt with the high pressure jet.

## OPERATING WITH COLD WATER

1. Use cold water for the removal of light contaminations and clear rinse, i.e.: gardening tools, terrace, tools, etc.
2. Set the operating pressure according to the needs of the job.

## OPERATING WITH HOT WATER

We recommend the following cleaning temperatures:

- Light contaminations - 30-50°C
- Contaminations containing proteins, eg. the food processing industry max 60°C
- Very oily dirt - 60-95°C

---

# OPERATION

---



**WARNING: IN CASE OF OPERATION INDOORS, ADEQUATE VENTILATION AND GAS VENTING MUST BE ASSURED.**

---

## HOLDING THE LANCE

1. Users must hold the gun in the correct position with one hand on the grip and the other on the lance as shown.

**NOTE: NEVER** touch any metal parts of the lance as they will get hot during use during hot washing.



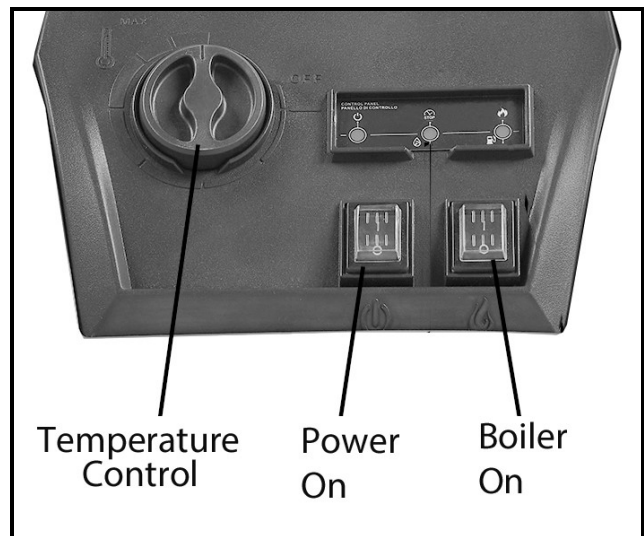
## WASHING WITH COLD WATER

1. Set the ON/OFF switch to ON.
2. Squeeze the gun trigger.

## WASHING WITH HOT WATER

1. Set the ON/OFF switch to ON.
2. Set the Burner ON/OFF switch to ON.
3. Turn the burner thermostat to the desired temperature setting.
4. Squeeze the gun trigger.

**CAUTION: SCALDING DANGER!**



## AUTOMATIC STOP SYSTEM

The automatic stop system stops the machine during the bypass mode and will restart it automatically when the trigger is pulled.

- It is advisable to activate the safety lock on the gun assembly whenever the machine is not being used in order to avoid unintentional starting.
- If the machine starts automatically without pressing the gun trigger this will be attributable to air bubbles in the water or other similar phenomena and does not imply the existence of any defects in the machine.
- **DO NOT** leave the machine unattended.

If you do not intend to use the machine for more than 5 minutes, set the ON/OFF switch to OFF.

## **SHUTTING DOWN THE MACHINE**

***IMPORTANT: After operation with hot water, the machine must be operated with open gun using cold water for two minutes due to the danger of scalding by hot water.***

1. Set all switches to OFF and remove the plug from the power supply with dry hands only.
2. Squeeze the trigger on the gun assembly to discharge any pressure in the hose.
3. Turn off and disconnect the water supply hose and allow it to drain fully.
4. Disconnect the high pressure hose and allow it to drain fully.
5. Lock the trigger gun.

---

## CARE AND MAINTENANCE

---



**WARNING: DISCONNECT THE MACHINE FROM THE POWER SUPPLY DURING CLEANING OR MAINTENANCE.**

**WARNING: DO NOT SPRAY THE MACHINE WITH WATER AND DO NOT USE DETERGENTS OR AGGRESSIVE SOLVENTS AS THEY COULD DAMAGE THE MACHINE.**

---

1. Clean the exterior part of the machine with a damp cloth.

### CLEANING THE WATER INLET FILTER

To ensure the pump gives good service it is extremely important to check and clean the water inlet filter frequently.

1. Rinse the nozzle, hose connection and water filter carefully under running water.

### CLEANING THE NOZZLE

A blockage in the nozzle may prevent the machine from operating correctly so it must be kept clean.

1. Switch off the machine and remove the lance.
2. Clean the nozzle with a suitable pin.
3. Rinse the nozzle under running water.

### STORING THE HOSE & CABLE

1. Coil the power cable and hose around the respective holder on the side of the machine as shown.
2. Store the gun/lance in the holder on the machine.



# TROUBLESHOOTING

<b>FAULT</b>	<b>CAUSE</b>	<b>SOLUTION</b>
When the main switch is turned on the machine does not start	Plug not properly connected. Plug fuses are burnt out. The pump has cut out.	Carefully check the plug and the electric cable. Check them and replace them. Turn the switch to ON while keeping the gun lever pressed. If the problem persists Contact CLARKE service.
The machine starts but no water comes out.	Pump, hoses or accessories frozen. No water supply Water filter fouled. Nozzle fouled.	Allow the pump and hose to thaw. Connect the machine to the water supply and turn on the tap. Remove and clean the filter. See MAINTENANCE. Remove the lance from the gun and clean the nozzle with the pin provided.
The motor stops suddenly or after a period of running.	The motor-protecting overload switch has been tripped	Allow the motor to cool for a few minutes. If the problem persists Contact CLARKE service.
When the lance is turned on, pressure decreases and increases	The nozzle is either clogged or deformed.	Either clean it or replace it.
	Either boiler coil or lance are clogged with limescale.	Contact CLARKE service.
The pump does not reach the fixed pressure	The pump sucks air with water. Inlet filter fouled. Lance nozzle worn Suction or delivery valves fouled or worn.	Remove and clean out the filter.  Replace the lance Contact CLARKE service.
Noisy operation	Inlet filter fouled Inlet water temperature too high. Suction or delivery valve fouled or worn. Bearing worn.	Remove and clean filter (See maintenance) Reduce the water temperature to below 40°C Contact CLARKE service.
Water in the fuel.	Seals are completely worn out.	Contact CLARKE service.



Irregular pressure fluctuations	Lance nozzle fouled  Pressure regulator valve on minimum setting.  Inlet filter fouled. Air bubbles in intake water The inlet and/or delivery valves are worn out. Pressure regulator gaskets worn.	Remove the lance from the gun and clean the nozzle with a suitable pin. Increase pressure by turning the hand-grip on the regulator. Check that the delivery rate is at least 12L/min. Supply a better stream of water. Remove and clean out the filter.  Contact CLARKE service.
Water leakage	Leaks from hose reel.  Leaks from inlet coupling.  Leaks from pump.	Tighten the couplings. If problem persists contact CLARKE service. Make sure the coupling has been fitted correctly. Contact CLARKE service.
When turning on the burner switch the boiler does not start	No fuel. Fuel filter is clogged. Fuel pump is blocked or burned out. Damaged thermostat. Ignition spark is inadequate or missing Electrode gap is incorrect	Check the level in the tank and that the rigid suction pipe is clean. Replace the line filter. Contact CLARKE service.
Water is not hot enough	Poor boiler performance. Boiler coil clogged with limescale.	Contact CLARKE service.

For all other problems contact the CLARKE service department.

## CONSUMABLES

A range of suitable hoses, shampoo and traffic film remover, snow-foam and drain cleaner are available from your CLARKE dealer including;

Accessories include;- Nozzle set EL27 (part no 7310303)

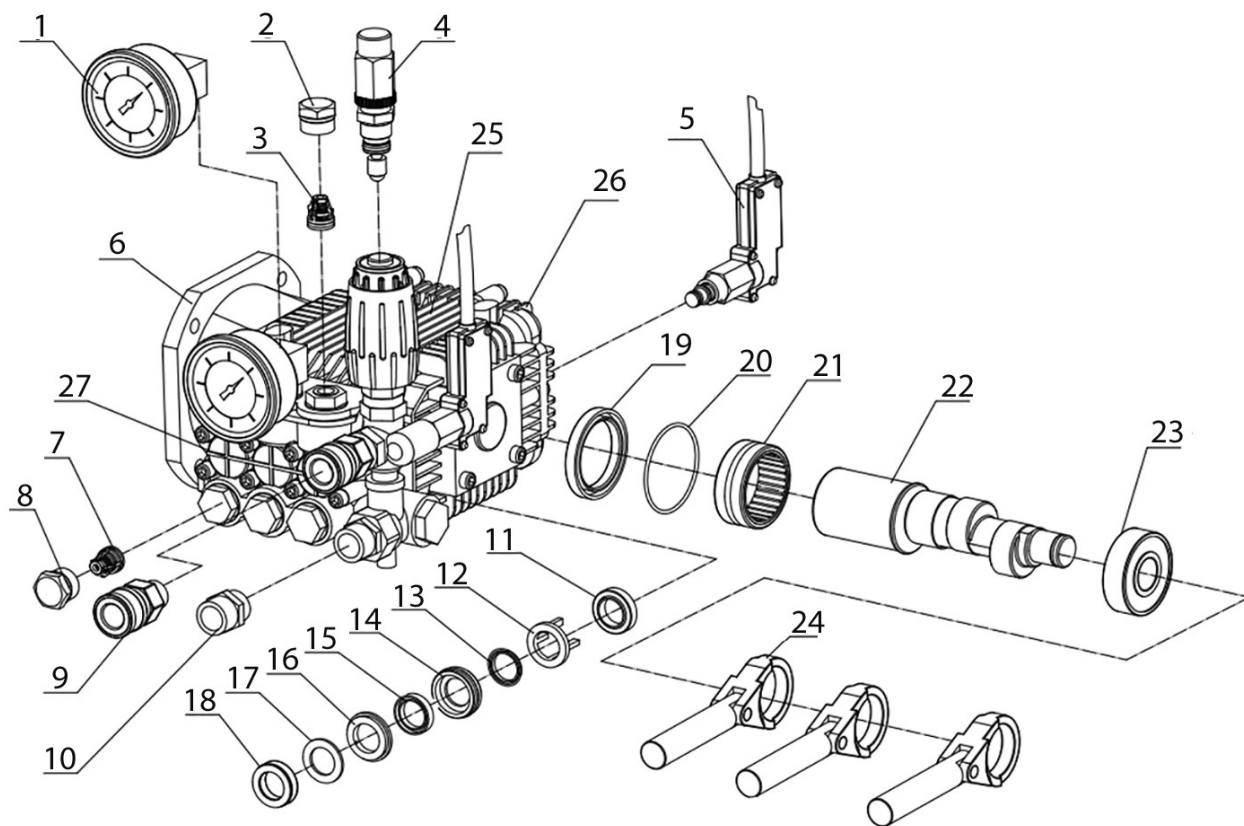
SFEC5 Economy Snow-Foam (part No 3050805)

SFC5 Premium Snow-Foam (part No 3050806)

SNF1 Snow Foam Bottle (part No 7310301)

DCH1 15m Drain Cleaning Hose (part No 7310306)

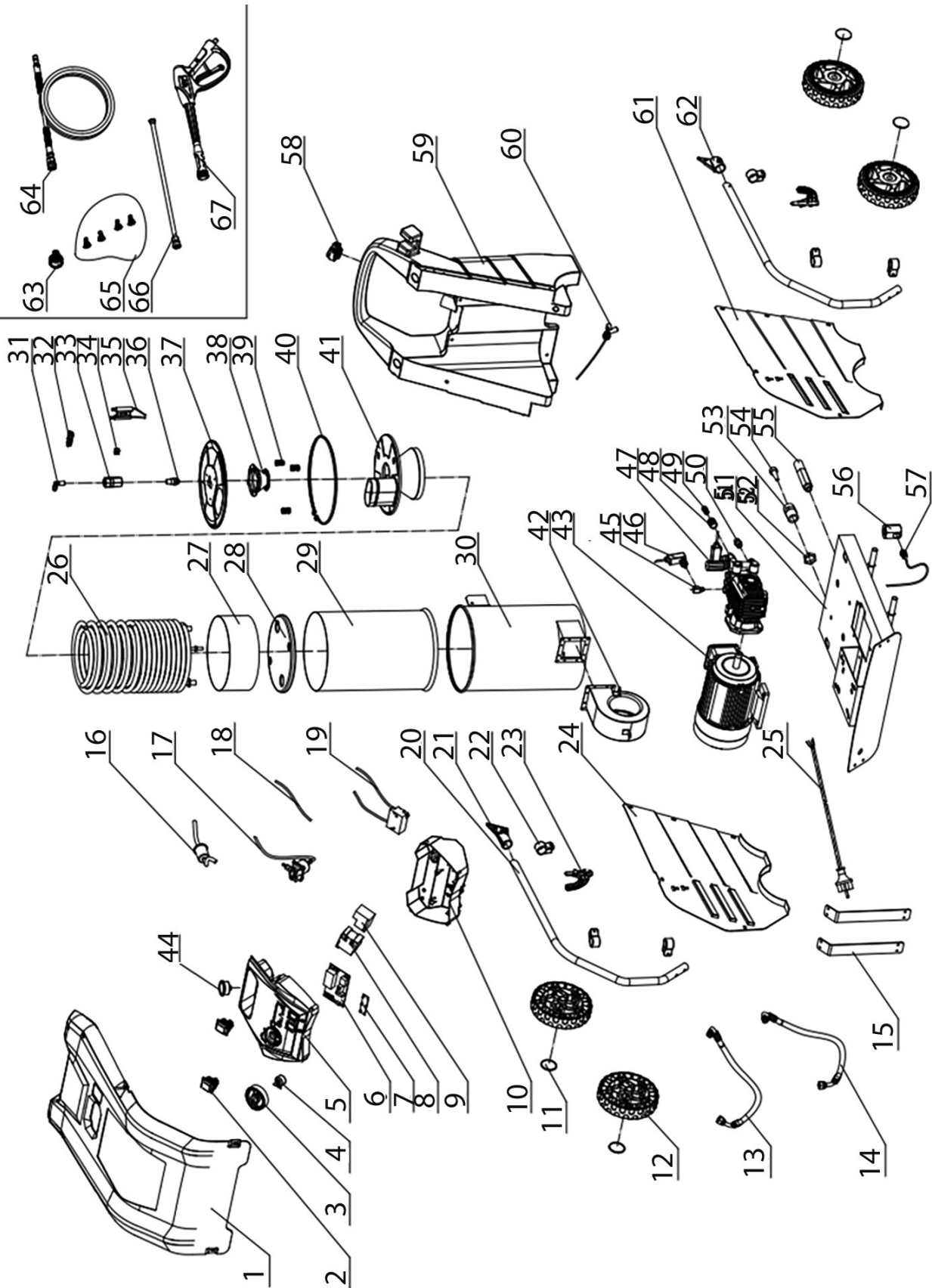
# PUMP COMPONENT PARTS



NO	DESCRIPTION
1	Pressure gauge
2	Valve cap
3	Valve set
4	By-pass set complete
5	Total stop set
6	Pump flange
7	Valve set complete
8	Valve cap
9	Outlet/non return valve
10	Connector
11	Seal
12	Seal seating
13	Seal part
14	Seal seating

NO	DESCRIPTION
15	Seal
16	Seal seating
17	Seal
18	Seal seating
19	Main oil seal outer
20	Main oil seal ring
21	Roller bearing
22	Pump main shaft
23	Bearing
24	Piston assembly
25	Housing
26	Oil cover
27	Brass head

# COMPLETE MACHINE PARTS



# COMPONENT PARTS

NO	DESCRIPTION
1	Cover panel
2	Cover switch
3	Control knob
4	Potentiometer
5	Controls box
6	Printed circuit board
7	LED plate
8	Relay 11kW
9	Thermal protector
10	Lower electrical box
11	Wheel clip
12	Wheel
13	High pressure hose L=600
14	M Press. hose L=650
15	Fixing bracket
16	Diesel filter 8mm
17	Diesel pump
18	High voltage cable
19	High voltage transformer
20	Tube (metal)
21	End fitting
22	Retaining clip
23	Support
24	Right cover panel
25	Cable
26	Heating coil
27	Internal belt
28	Insulation plate
29	Inner boiler casing
30	Outer boiler casing

NO	DESCRIPTION
31	Elbow
32	Bridge
33	Brass union
34	Washer
35	Electrical connector
36	Insert
37	Boiler lid
38	Chimney cone
39	Piston spring
40	Boiler closing ring
41	Lid with chimney
42	Motor fan
43	Motor
44	Pressure gauge
45	Brass connector
46	Pressure switch cable
47	Pump female shaft
48	Outlet/non return valve
49	Brass joint-HP hose connector
50	Connector
51	Frame
52	Inlet/outlet connection
53	Inlet connector
54	Inlet filter connector
55	Outlet connection
56	Thermostat joint
57	PT100 Temperature sensor
58	Diesel tank cap
59	Diesel tank
60	Diesel float

61	Left cover
62	Parts set plastic connector
63	Quick coupling inlet connector
64	Delivery hose

65	Nozzle set
66	Metal lance
67	Gun assembly complete

---

## PRODUCT SPECIFICATIONS

---

Model Number	King 300
Part Number	7320182
Voltage	230 V / 50 Hz / 1 Ph
Power cable length	4500mm
Ingress Protection Rating	IPX4
Motor Input Power	3100W
Motor Input Current	13 A
Duty Cycle	S1 (continuous)
Max Inlet Water Pressure	10 Bar
Working pressure (outlet)	120 Bar
Maximum output pressure	150 Bar
Maximum output flow rate	11 Litres / min (660 L/hr)
Maximum output temperature	95°C
Maximum input temperature	40°C
Fuel tank capacity	22 Litre
Diesel fuel consumption	0.25 L/min
Sound power level (L <sub>WA</sub> )	92 dB
Guaranteed sound power level (L <sub>WA</sub> )	95 dB
Sound pressure level	77.20 dB LpA
Vibration	2.324 m/s <sup>2</sup>
Dimensions (D x W x H)	1090 x 690 x 875 mm
Weight	110 kg



**DECLARATION OF CONFORMITY**


This is an important document and should be retained.

**We hereby declare that this product(s) complies with the following legislation: The following standards have been applied to the product(s):**

- |            |  |   |
|------------|--|---|
| 2000/14/EC | Outdoor Noise Directive                              | EN ISO 3744:1995, EN 62321-5:2014, EN 62321-6:2015, EN 62321-8:2017, EN 62233:2008, |
| 2014/30/EU | Electromagnetic Compatibility Directive              | EN 62321-4:2014/A1:2017, EN IEC 62321-2:2021, EN IEC 55014-1:2021, EN 62321-1:2013, |
| 2006/42/EC | Machinery Directive                                  | EN 300 330-2 V1.5:2010, EN IEC 55014-2:2021, EN 62321-7-1:2015, EN 62321-3-1:2014,  |
| 2011/65/EU | Restriction of Hazardous Substances (RoHS) Directive | EN 60335-1:2012+A11:2014+A13:2017+A1:2019+A14:2019+A2:2019+A15:2021,                |
|            |  | EN 61000-3-3:2013+A1:2019+A2:2021, EN 60335-2-79:2012, EN 62321-8:2017,             |
|            |  | EN IEC 61000-3-2:2019+A1:2021   |

The technical documentation required to demonstrate that the product(s) meet(s) the requirement(s) of the aforementioned legislation has been compiled and is available for inspection by the relevant enforcement authorities.

**The UKCA mark was first applied in: 2025**

<b>Manufacturer:</b>	Clarke International Ltd, Hemmall Street, Epping, Essex, CM16 4LG, United Kingdom	<b>Notified Body:</b>	N/A
<b>Product Description:</b>	Power Washer	<b>Assessment Procedure:</b>	Annex V of above noise legislation
<b>Model Number(s):</b>	KING 300	<b>Measured LWA:</b>	92 dB
<b>Serial/Batch Number:</b>	Refer to product/packaging label	<b>Guaranteed LWA:</b>	95 dB
<b>Document Holder:</b>	Alan Pond	<b>Signed:</b>	 ..... J.A Clarke Director
<b>Date of Issue:</b>	14/01/2025		

# DECLARATION OF CONFORMITY - CE



## DECLARATION OF CONFORMITY


This is an important document and should be retained.

**We hereby declare that this product(s) complies with the following legislation: The following standards have been applied to the product(s):**

2000/14/EC	Outdoor Noise Directive	EN ISO 3744:1995, EN 62321-5:2014, EN 62321-6:2015, EN 62321-8:2017, EN 62233:2008,
2014/30/EU	Electromagnetic Compatibility Directive	EN 62321-4:2014/A1:2017, EN IEC 62321-2:2021, EN IEC 55014-1:2021, EN 62321-1:2013,
2006/42/EC	Machinery Directive	EN 300 330-2 V1.5.1:2010, EN IEC 55014-2:2021, EN 62321-7-1:2015, EN 62321-3-1:2014,
2011/65/EU	Restriction of Hazardous Substances (RoHS) Directive	EN 60335-1:2012+A11:2014+A13:2017+A1:2019+A14:2019+A2:2019+A15:2021,
		EN 61000-3-3:2013+A1:2019+A2:2021, EN 60335-2-79:2012, EN 62321-0:2017,
		EN IEC 61000-3-2:2019+A1:2021

The technical documentation required to demonstrate that the product(s) meet(s) the requirement(s) of the aforementioned legislation has been compiled and is available for inspection by the relevant enforcement authorities.

The CE mark was first applied in: 2025

<b>Manufacturer:</b>	Clarke International Ltd, Fitzwilliam Hall, Fitzwilliam Place, Dublin 2, Republic of Ireland	<b>Notified Body:</b>	N/A
<b>Product Description:</b>	Power Washer	<b>Assessment Procedure:</b>	Annex V of above noise legislation
<b>Model Number(s):</b>	KING 300	<b>Measured LWA:</b>	92 dB
<b>Serial/Batch Number:</b>	Refer to product/packaging label	<b>Guaranteed LWA:</b>	95 dB
<b>Document Holder:</b>	Alan Pond	<b>Signed:</b>	 ..... J.A Clarke
<b>Date of Issue:</b>	14/01/2025		Director

KING 300 CE Clarke DOC 011425

Page 1 of 1

# A SELECTION FROM THE VAST RANGE OF

# Clarke®

## QUALITY PRODUCTS



**AIR COMPRESSORS**  
From DIY to industrial, Plus air tools, spray guns and accessories.

**GENERATORS**  
Prime duty or emergency standby for business, home and leisure.

**POWER WASHERS**  
Hot and cold, electric and engine driven - we have what you need

**WELDERS**  
Mig, Arc, Tig and Spot. From DIY to auto/industrial.

**METALWORKING**  
Drills, grinders and saws for DIY and professional use.

**WOODWORKING**  
Saws, sanders, lathes, mortisers and dust extraction.

**HYDRAULICS**  
Cranes, body repair kits, transmission jacks for all types of workshop use.

**WATER PUMPS**  
Submersible, electric and engine driven for DIY, agriculture and industry.

**POWERTOOLS**  
Angle grinders, cordless drill sets, saws and sanders.

**STARTERS/CHARGERS**  
All sizes for car and commercial use.



## PARTS & SERVICE: 0208 988 7400

**Parts Enquiries**  
[Parts@clarkeinternational.com](mailto:Parts@clarkeinternational.com)

**Servicing & Technical Enquiries**  
[Service@clarkeinternational.com](mailto:Service@clarkeinternational.com)

SALES: UK 01992 565333 or Export 00 44 (0)1992 565335

**Clarke® INTERNATIONAL** Hemnall Street, Epping, Essex CM16 4LG  
[www.clarkeinternational.com](http://www.clarkeinternational.com)